

TAMLITE
LIGHTING



ARPS SERIES AREA LIGHTING

Parking Lots • Road & Pathways • Public Spaces
Campuses • Work Sites • Parks & Recreation

WWW.TAMLITE.CA

Built for the present. Designed for the future.

The TamLite ARPS LED area lights are, at their core, designed for the dynamic lighting needs of today, tomorrow, and beyond.

In today's drive for energy efficiency, both new build and retrofits demand high performance, affordable lighting technology which meets increasing standards while matching traditional lighting performance values.

LED technology and innovative electronics have afforded the opportunity for lighting to evolve into much more than just a luminaire. Tomorrow's needs include adaptive dimming controls, integration with campus and municipal lighting networks, and use as a hardware framework for Internet of Things (IoT) devices.

We have developed the ARPS series to act as a springboard for these future needs. All ARPS models ship as standard with a 7 pin twist lock socket, and 1-10V dimmable driver complete with 12V auxiliary output, so these luminaires are ready to integrate with your future control strategies, as well as act as a power point for additional low voltage devices.

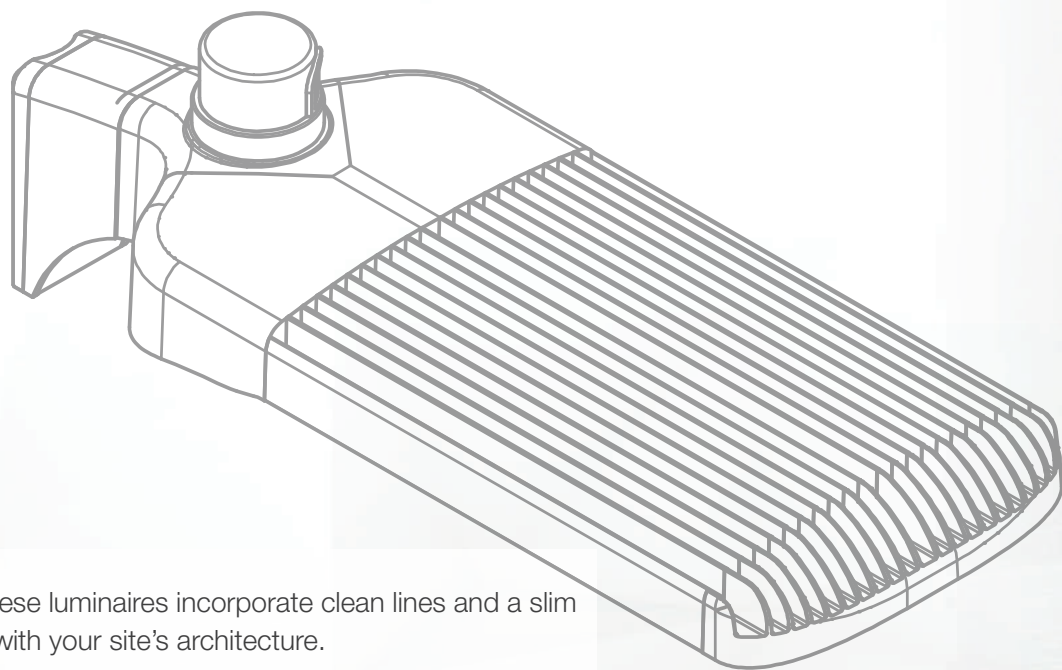
High performance LED's and a robust design aesthetic, make this family of fixtures ready to install today for simple energy saving strategies in existing installations with traditional control methods, but are fully capable of moving forward with your ever evolving needs.

QUALITYDRIVEN **PERFORMANCE**FOCUSED **SOLUTIONS**COMMITTED **CUSTOMER**CENTERED



Industry-leading high efficiency Nichia® chipsets form the backbone of these luminaires. Achieving up to 130lm/W with a projected L_{90} of over 60,000 hrs, these light engines truly redefine performance standards.

Our engineers didn't stop there. Colour tolerance plays a huge role in our perception of spaces. Many LED luminaires on the market use a 7 step MacAdam Ellipse colour tolerance, which allows for distinct variations of up to 566K between units. By specifying more stringent binning techniques, the ARPS series tightens this tolerance to 3 steps, limiting allowable colour variance to inperceptable levels, providing precise colour uniformity across your installation.



Minimalist design says it all. These luminaires incorporate clean lines and a slim profile to integrate seamlessly with your site's architecture.

Low profile, custom engineered heat sinks provide excellent heat management for the thermally bonded LED boards, ensuring cool operation in ambient temperatures up to 40°C. Thermally isolating the driver from the light engines further ensures that the entire system is able to perform at its optimal point for extended worry-free use.

Exterior luminaires take quite a beating. Between harmful UV Radiation, gale driven sleet, and electrical surges, these luminaires are built to withstand whatever nature throws at them.

All models ship fitted with 10kV surge protection, are sealed to IP66 standards, and are built to operate in temperatures as low as -40°C, and up to 40°C ambient. Additionally, the sleek low profile design with projected areas as low as 1.4 sqft, make these luminaires very tolerant of high winds.

The ARPS series is also designed with short circuit and over-temperature protection built in to ensure the luminaire is protected in even the most adverse conditions.

The brains of the operation are some of the smartest around. Inventronics® driver systems integrated into the ARPS series have a lifetime in excess of 116,000 hrs, provide multi-volt input for ease of wiring, and ensure inherent protection against over-temperature and short circuits.

In addition to these standard features, 1-10V dimming capability allows for integration with a large number of common dimming and control devices, and the 12V_{aux} output allows for the future connection of low voltage devices such as occupancy sensors, security cameras, and wireless access points.

FLEXIBLE CUTTING EDGE PERFORMANCE

A simple, yet elegant flexibility lies at the heart of the ARPS series. Low profile, precision moulded, Acrylic optics fully seal the LED arrays to provide unparalleled optical performance.

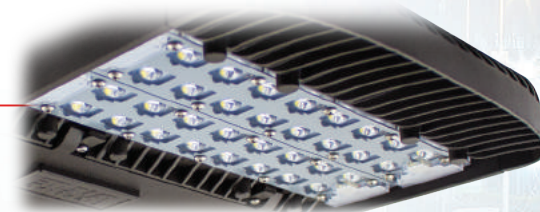
With a full range of these interchangeable optics, this family of fixtures allows installations to maintain a uniform aesthetic without sacrificing area coverage.

Inherently fully cut-off, the ARPS series conform to municipal directives for 0% uplight, while maintaining excellent coverage and glare control. House-Side shields also provide additional backlight control for areas where light trespass is of concern.

These specifically engineered optical packages give us the flexibility to mimic existing HID options for identical replacement, as well as tailor solutions for new builds, with minimal wasted light and energy.

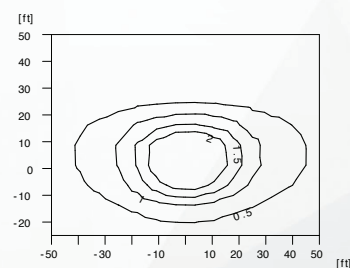


Speciality Engineered Optics

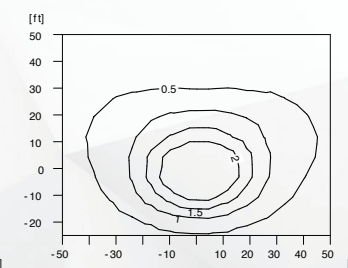


House Side Shields

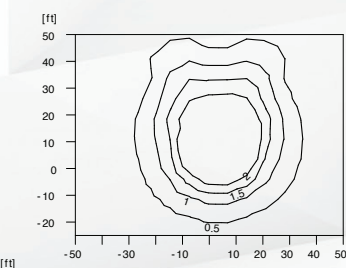
Type II



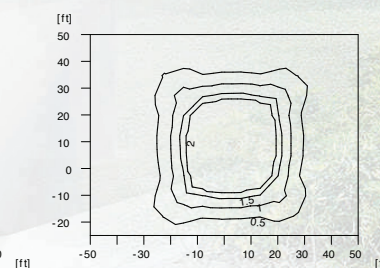
Type III



Type IV



Type V



FUTURE PROOF

Lighting technology is rapidly evolving in today's market, with ever increasing demands for performance and control. With this in mind, our engineers rose to the challenge of creating a fixture capable of handling simple retrofit jobs in an economical way, while creating a platform for integration with complex systems designed to provide complete control of vast lighting networks.

The key component to this solution is the LED driver, providing 1-10V dimming control, and a 12V_{aux} output for secondary control devices. This allows for the integration of dimming photocontrols and occupancy sensors to control the light output, as well as providing a wiring point for low voltage auxiliary devices such as security cameras, wireless access points, and sensors.

Building upon this flexibility, is the seven pin NEMA twist lock socket. The socket retains the same three power poles for use with traditional twist lock photocells, but also includes four auxiliary contact pads, already connected to a wiring harness for ease of use. In basic installations these can be used to connect the driver to a dimming photocell and for more advanced use, the options for connectivity and control are limitless. On the bottom of the gear box is a 1" conduit knockout for the physical connection of these devices.

Because each of these features come standard, your future needs are not limited by hardware. Today we can enable your energy saving retrofit or high performance new build, while keeping your future need for more advanced control firmly within reach.



7 PIN NEMA SOCKET

Next generation integration
as standard



BOTTOM KNOCKOUT

Options for future expansion

ORDERING INFORMATION

Series	Wattage	CCT	Optics	Voltage	Finish
ARPS	35W	3K (3000K)	T2 (Type II Long)	UNV (120-277VAC)	BZ (Bronze)
	75W	4K (4000K)	T3 (Type III Medium)	UN4 (347-480VAC)	WH (White)
	140W	5K (5000K)	T4 (Type IV Short)		
	185W		T5 (Type Square)		

Example: ARPS355KT3-UNV-BZ

MOUNTING OPTIONS & ACCESSORIES

(ORDERED SEPARATELY)

Part Number	Description
AR-PSSQ-BZ	Square Pole Mount Bronze
AR-PSSQ-WH	Square Pole Mount White
AR-PS3R-BZ*	3" Round Pole Mount Adapter Bronze
AR-PS4R-BZ*	3" Round Pole Mount Adapter White
AR-PS4R-WH*	4" Round Pole Mount Adapter White
AR-PS4R-BZ*	4" Round Pole Mount Adapter Bronze
AR-PS5R-BZ*	5" Round Pole Mount Adapter Bronze
AR-PS5R-WH*	5" Round Pole Mount Adapter White
AR-PSSF-BZ	Adjustable Slip Fitter for 2-3/8" Tenon Bronze
AR-PSSF-WH	Adjustable Slip Fitter for 2-3/8" Tenon White
AR-SPIKE	Bird Repellant Spikes

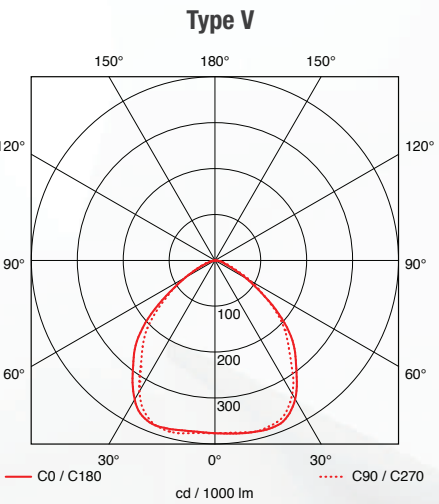
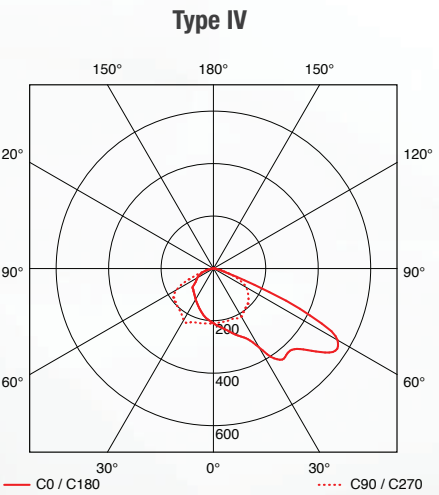
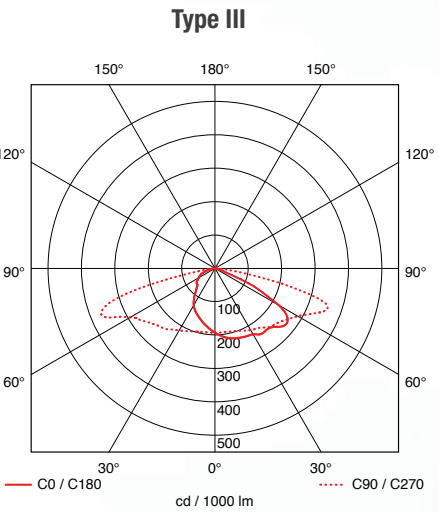
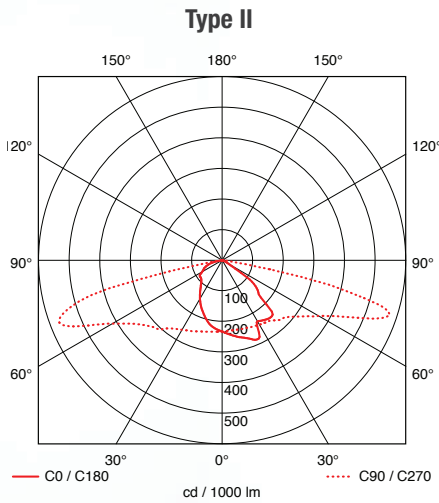
*Round Pole Adapters require Square Pole Mount for assembly to luminaire

1: Specifications subject to change without notice. Please consult latest edition of specification sheet for up to date performance.
2: When used with a square pole mount
3: Estimated based on lumen output equivalence to HID luminaires in service for 3 years or more
4: Based on annual average of 12 hours/day and \$0.09/kWh utility rate against traditional HID equivalents



SPECIFICATION OVERVIEW¹

Model	Wattage	Lumen Output	Efficacy	EPA ²	Dimmable	HID Equivalent ³	Annual Savings ⁴
ARPS35	36W	4,760 lm	130 lm/W	1.39 sqft	1-10V	175W	\$68.50
ARPS75	73W	8,980 lm	123 lm/W	1.39 sqft	1-10V	250W	\$86.75
ARPS140	142W	16,330 lm	115 lm/W	1.73 sqft	1-10V	400W	\$124.50
ARPS185	187W	24,640 lm	132 lm/W	2.08 sqft	1-10V	575W	\$186.50



Tamlite Lighting has a deeply rooted history of manufacturing quality-driven, performance focused lighting solutions for customers across the globe since our inception in 1967. From humble beginnings in the UK, Tamlite opened its first North American presence in 1996 with production facilities in the USA, and in 2006, opened our doors in Canada.

Commitment to quality is the foundation of everything we do, from customer relations, to design services, through to product development and manufacturing. This motivation drives our perpetual innovation in an ever changing industry, firmly anchored in customer centric solutions.

Our goal is to provide you with a responsive and adaptive business partner, upon whom you can rely to develop product solutions tailored for your diverse lighting needs.

We look forward to the opportunity to work with you on your next project!

Tamlite Canada

10 Perdue Ct.
Caledon, ON
L7C 3M6
Canada
(905) 495-4432

Tamlite USA

660 NW Peacock Blvd.
Port St. Lucie, FL
34986
USA
(772) 879 7440

QUALITYDRIVEN

PERFORMANCEFOCUSED

SOLUTIONSCOMMITTED

CUSTOMERCENTERED